



HUOT SRY TRADE & CONSTRUCTION CO., LTD.

Monthly Report March-2024

**TRANSMISSION LINE 500KV
LAO BORDER TO P. PENH SS**

**PREPARED BY : SEN RINETH
SITE SURVEYOR**

Address: #45, St. P06, Sangkat Phnom Penh Thmey, Khan Sensok, PhnomPenh, Cambodia
Contact number: (+855)81 700 927, Company's Website: huotsry.com
Email Address: huotsry@gmail.com

PROJECT PROGRESS REPORT

PROJECT: PCL 17

1. SUMMARY OF CONSTRUCTION PROGRESS AS OF MARCH 2024 LAOS BORDER TO PNH SS TRANSMISSION LINE 500KV.

PROJECT PROGRESS	% PLAN
1. Pad and Chimney Foundation	100%
2. Trees Cutting	100%
OVERALL PROJECT	100%

LIST OF MANPOWER

DESCRIPTION
1. Site Manager
2. Safety Officer
3. Stock Keeper
4. Foreman
5. Surveyor
6. Excavator Driver
7. Concrete Mixer Truck Driver
8. Hamer Driver
9. Truck Driver
10. Trailer Driver
11. Worker

LIST OF MACHINERY

DESCRIPTION
1. Concrete Vibrating
2. Steel Cutting Machine
3. Steel Bending Machine
4. Steel Cutting Motor
5. Welding Machine
6. Container Office and Stock
7. Generator (High Capacity)
8. Small generator
9. Concrete Mixing Machine
10. Concrete Mixing Truck
11 Self-Loading Concrete Mixer
12. Excavator
13. Hammer Truck
14. Trailer
15. Cambodia Truck
16. Tractors
17. Wheel loader
18. Bored pile drilling machine
19. Compactor machine mini
20. Car
21. Total Station (Sokkia)
22. Auto Level (Sokkia)

1. (T320 Soil Excavation Works.)



Soil excavation of the leg B



Soil excavation of the leg B



Soil excavation of the leg C.



Soil excavation of the leg C.



Soil excavation of the leg A.



Soil excavation of the leg A.

1. (T320 lean Concrete Works.)



In put the clastic B.



Lean casting concrete B.



Lean casting concrete B.



Lean casting concrete B.



In put the clastic C.



Lean casting concrete C.

1. (T320 lean Concrete Works.)



Lean casting concrete C.



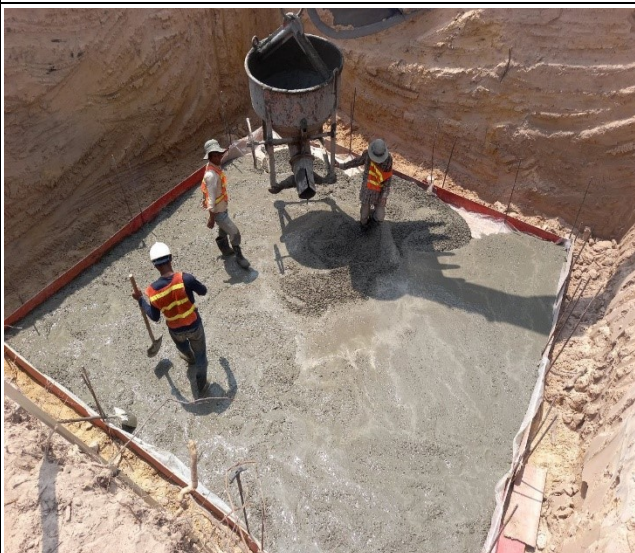
In put the plastic A.



Lean casting concrete of the leg A.



Lean casting concrete of the leg A.



Lean casting concrete of the leg D.



Lean casting concrete of the leg D.

1. (T320 Stub Setting Works.)



Stub setting of the leg A.



Stub setting of the leg B.



Stub setting of the leg C.



Stub setting of the leg D.



Rebar arrangement of the leg A.



Formwork installation of the leg A.

1. (T320 Base Works.)



Base casting concrete of the leg A.



Base casting concrete of the leg A.



Base casting concrete of the leg B.



Base casting concrete of the leg B.



Base casting concrete of the leg B.



Base casting concrete of the leg B.

1. (T320 Base Works.)



Rebar arrangement of the leg C.



Casting concrete base of the leg C.



Casting concrete base of the leg C.



Casting concrete base of the leg C.



Casting concrete base of the leg D.

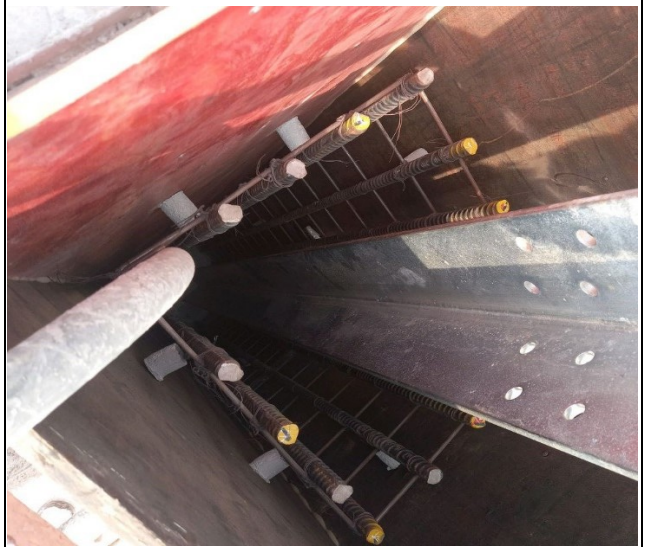


Casting concrete base of the leg D.

1. (T320 Chimney Works.)



Chimney formwork installation of the leg A.



Chimney formwork installation of the leg A.



Chimney casting concrete of the leg A.



Chimney casting concrete of the leg A.



Chimney casting concrete of the leg A.



Chimney casting concrete of the leg A.

1. (T320 Chimney Works.)



Chimney formwork installation of the leg B.



Chimney formwork installation of the leg B.



Chimney casting concrete of the leg B.



Chimney casting concrete of the leg B.



Chimney casting concrete of the leg B.



Chimney casting concrete of the leg B.

1. (T320 Chimney Works.)



Casting concrete chimney leg C.



Casting concrete chimney leg C.



Casting concrete chimney leg C.



Chimney casting concrete of the leg D.



Casting concrete chimney leg D.



Casting concrete chimney leg D.

1. (T320 Chimney Works.)



Remove formwork chimney leg A.



Remove formwork chimney leg A.



Remove formwork chimney leg A.



Remove formwork chimney leg A.



Remove formwork chimney leg B.



Remove formwork chimney leg B.

1. (T320 Chimney Works.)



Remove formwork chimney leg C



Remove formwork chimney leg C



Remove formwork chimney leg D.



Remove formwork chimney leg D.



Remove formwork chimney leg D.



Remove formwork chimney leg D.

Thank you!