



HUOT SRY TRADE & CONSTRUCTION CO., LTD.

Monthly Report April -2024

**TRANSMISSION LINE
GS12 TO STUNG TATAY**

**PREPARED BY : SEN RINET
SITE SURVEYOR**

Address: 45, St P06, Sangkat Phnom Penh Thmey, Khan Sensok, PhnomPenh, Cambodia
Contact number: (+855)81 700 927, Email Address: huotsry@gmail.com

PROJECT PROGRESS REPORT

PROJECT: PCL07

1. SUMMARY OF CONSTRUCTION PROGRESS AS OF APRIL 2024 GS12 TO STUNG TATAY TRANSMISSION LINE.

PROJECT PROGRESS	% PLAN
1. Pad and Chimney Foundation	100%
2. Tower Erection	100%
3. Tree Cutting	100%
OVERALL PROJECT	100%

LIST OF MANPOWER

DESCRIPTION
1. Project Manager
2. Site Manager
3. Site Supervisor
4. Site Engineer
5. Safety Officer
6. Site Procurement
7. Stock Keeper
8. Foreman
9. Surveyor
10. Concrete Team
11. Rebar Team
12. M&E Team
13. Erection Team
14. Security

LIST OF MACHINERY

DESCRIPTION
1. Concrete Vibrating
2. Steel Cutting Machine
3. Steel Bending Machine
4. Dump Truck
5. Welding Machine
6. Container Office and Stock
7. Generator
8. Mobile Concrete Mixing Machine
9. Concrete Mixing Truck
10. Excavator
11. Mobile Crane
12. Trailer
13. Breaker
14. Cambodia Car

SITE PHOTOS OF GS12 TO STUNG TATAY.

1. Pad and Chimney Foundation (T-A193)



Soil excavation for the leg C.



Soil excavation for the leg C.



Soil excavation for the leg A.



Soil excavation for the leg D.



Casting concrete Lean for the leg C.



Casting concrete Lean for the leg C.

1. Pad and Chimney Foundation (T-A193)



Casting concrete Lean for the leg D.



Casting concrete Lean for the leg D.



Casting concrete Lean for the leg A.



Casting concrete Lean for the leg A.



Casting concrete Lean for the leg B.



Casting concrete Lean for the leg B.

1. Pad and Chimney Foundation (T-A193)



Set stub for the leg C.



Set stub for the leg D.



Soil excavation for the leg A.



Soil excavation for the leg B.



Casting concrete base for the leg C.



Casting concrete base for the leg C.

1. Pad and Chimney Foundation (T-A193)



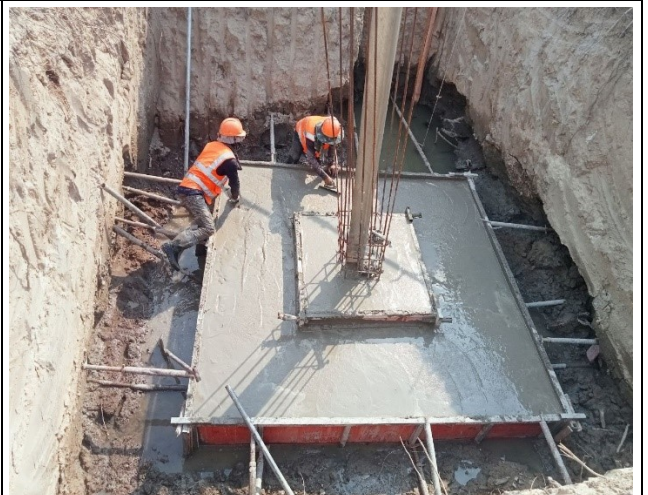
Casting concrete base for the leg D.



Casting concrete base for the leg D.



Casting concrete base for the leg A.



Casting concrete base for the leg A.



Casting concrete base for the leg B.



Casting concrete base for the leg B.

1. Pad and Chimney Foundation (T-A193)



Casting concrete chimney for the leg C.



Casting concrete chimney for the leg C.



Casting concrete chimney for the leg D.



Casting concrete chimney for the leg D.

Casting concrete base for the leg C.

Casting concrete base for the leg C.

1. Pad and Chimney Foundation (T-C117)



Soil excavation for the leg A.



Soil excavation for the leg B.



Soil excavation for the leg C.



Soil excavation for the leg D.



Casting concrete Lean for the leg B.



Casting concrete Lean for the leg C.

1. Pad and Chimney Foundation (T-C117)



Casting concrete Lean for the leg D.



Casting concrete Lean for the leg A.



Stub setting for the leg B.



Stub setting for the leg C.



Stub setting for the leg D.



Stub setting for the leg A.

1. Pad and Chimney Foundation (T-C117)



Casting concrete base for the leg A.



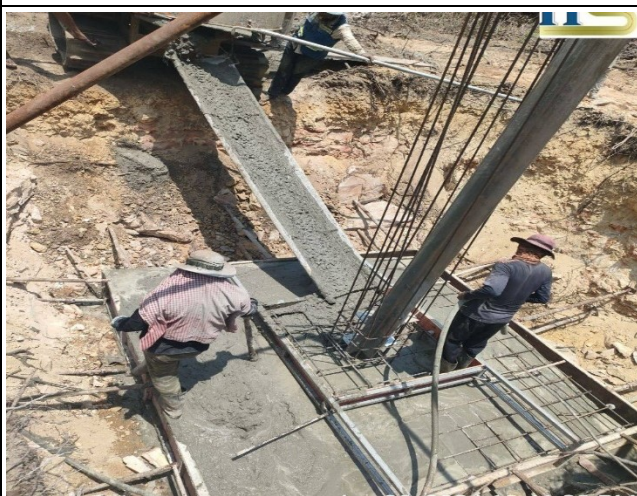
Casting concrete base for the leg A.



Casting concrete base for the leg B.



Casting concrete base for the leg B.



Casting concrete base for the leg C.



Casting concrete base for the leg C.

1. Pad and Chimney Foundation (T-C117)



Casting concrete base for the leg D.



Casting concrete base for the leg D.



Casting concrete Chimney for the leg A.



Casting concrete Chimney for the leg B.



Casting concrete Chimney for the leg C.



Casting concrete base for the leg D.

1. Pad and Chimney Foundation (T-C116)



Soil excavation for the leg A.



Soil excavation for the leg D.



Soil excavation for the leg C.



Soil excavation for the leg B.



Casting concrete lean for the leg B.



Casting concrete lean for the leg C.

1. Pad and Chimney Foundation (T-C116)



Casting concrete lean for the leg D.



Casting concrete lean for the leg A.



Set stub for the leg B.



Set stub for the leg C.



Set stub for the leg A.

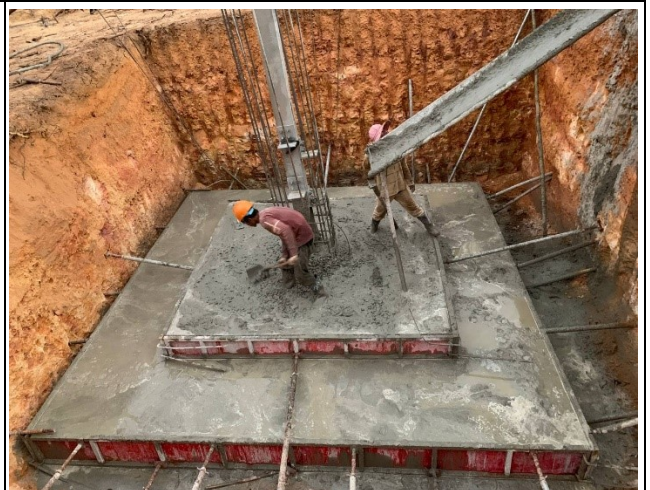


Set stub for the leg D.

1. Pad and Chimney Foundation (T-C116)



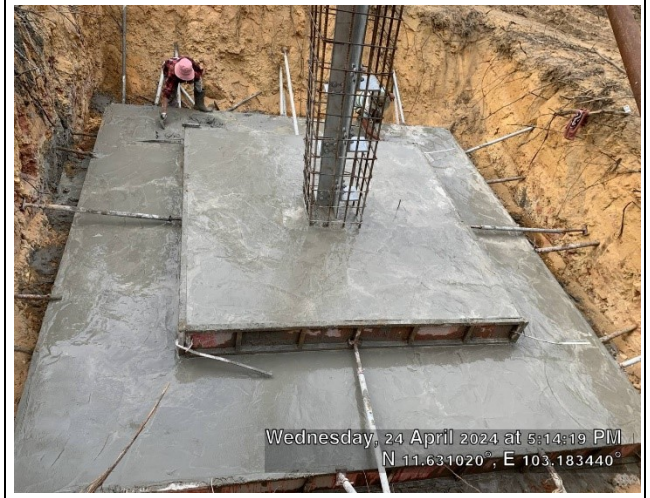
Casting concrete Base for the leg B.



Casting concrete Base for the leg B.



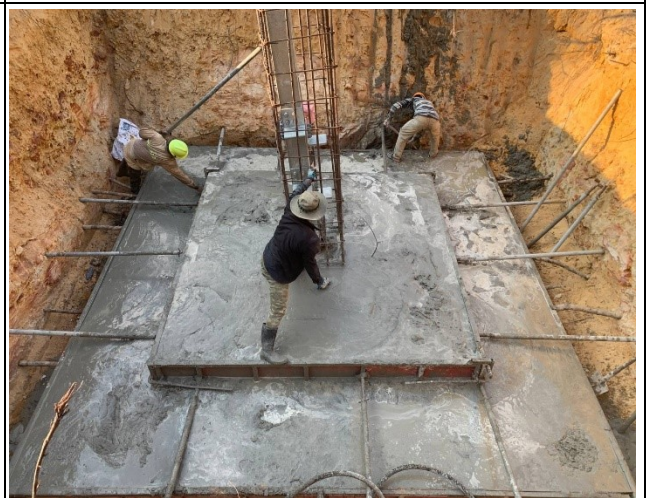
Casting concrete Base for the leg C.



Casting concrete Base for the leg C.



Casting concrete Base for the leg D.



Casting concrete Base for the leg D.

1. Pad and Chimney Foundation (T-C116)



Casting concrete Base for the leg A.



Casting concrete Base for the leg A.



Casting concrete Chimney for the leg B.



Casting concrete Chimney for the leg B.



Casting concrete Chimney for the leg C.



Casting concrete Chimney for the leg C.

1. Pad and Chimney Foundation (T-C116)



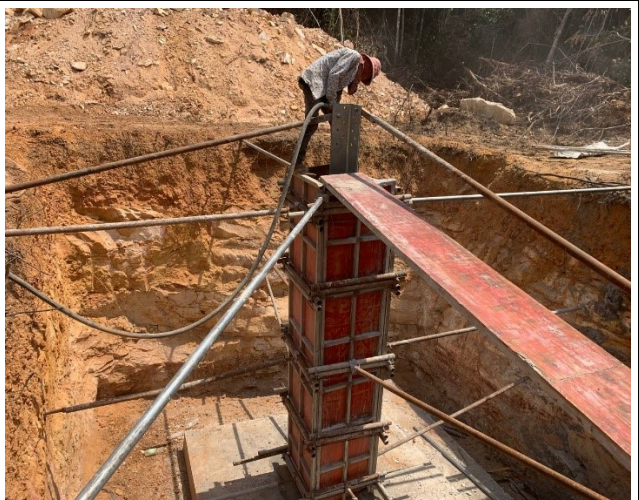
Casting concrete Chimney for the leg D.



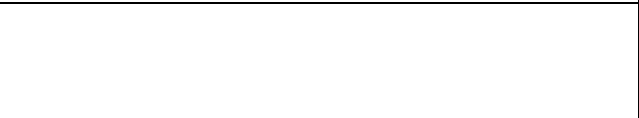
Casting concrete Chimney for the leg D.



Casting concrete Chimney for the leg A.



Casting concrete Chimney for the leg A.



1. Pad and Chimney Foundation (T-C079)



Soil excavation for the leg A.



Soil excavation for the leg B.



Soil excavation for the leg C.



Soil excavation for the leg D.



Casting concrete lean for the leg A.



Casting concrete lean for the leg B.

1. Pad and Chimney Foundation (T-C079)



Casting concrete lean for the leg C.



Soil excavation for the leg D.



Set stub for the leg A.



Set stub for the leg B.



Set stub for the leg C.



Set stub for the leg D.

1. Pad and Chimney Foundation (T-C079)



Casting concrete base for the leg A.



Soil excavation base for the leg A.



Casting concrete base for the leg B.



Casting concrete base for the leg B.



Casting concrete base for the leg C.



Casting concrete base for the leg C.

1. Pad and Chimney Foundation (T-C079)



Casting concrete base for the leg D.



Soil excavation base for the leg D.



Casting concrete chimney for the leg C.



Casting concrete chimney for the leg C.



Casting concrete chimney for the leg A.



Casting concrete chimney for the leg A.

1. Pad and Chimney Foundation (T-C079)



Casting concrete base for the leg B.



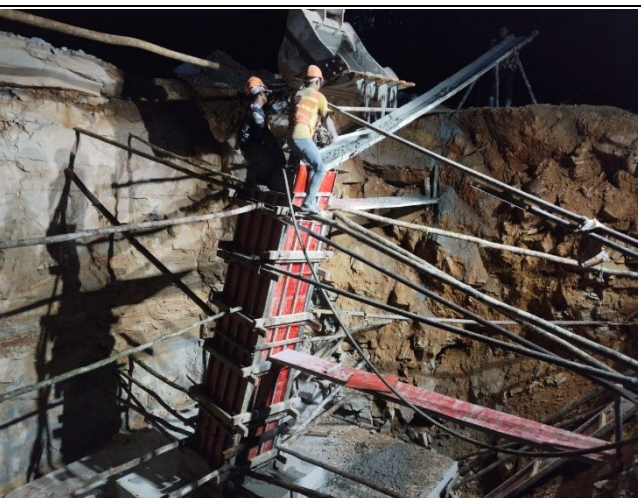
Soil excavation base for the leg B.



Casting concrete chimney for the leg C.



Casting concrete chimney for the leg D.



Casting concrete base for the leg D.



Casting concrete base for the leg D.

1. Pad and Chimney Foundation (T-C081)



Soil excavation for the leg A.



Soil excavation for the leg B.



Soil excavation for the leg C.



Soil excavation for the leg D.



Casting concrete lean for the leg A.



Casting concrete lean for the leg B.

1. Pad and Chimney Foundation (T-C081)



Casting concrete lean for the leg C.



Casting concrete lean for the leg D.



Stub setting for the leg A.



Stub setting for the leg B.



Stub setting for the leg C.



Stub setting for the leg D.

1. Pad and Chimney Foundation (T-C081)



Casting concrete Base for the leg A.



Casting concrete Base for the leg A.



Casting concrete Base for the leg B.



Casting concrete Base for the leg B.



Casting concrete Base for the leg D.



Casting concrete Base for the leg D.

1. Pad and Chimney Foundation (T-C081)



Casting concrete Base for the leg C.



Casting concrete Base for the leg C.



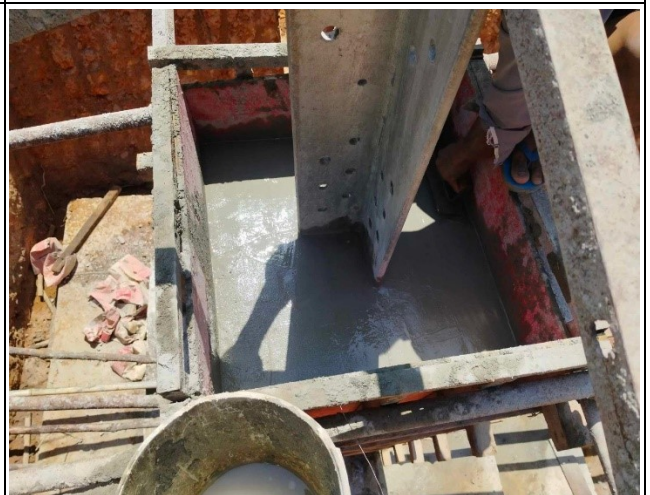
Casting concrete chimney for the leg A.



Casting concrete chimney for the leg A.



Casting concrete chimney for the leg B.



Casting concrete chimney for the leg B.

1. Pad and Chimney Foundation (T-C081)



Casting concrete chimney for the leg D.



Casting concrete chimney for the leg D.



Casting concrete chimney for the leg D.



Casting concrete chimney for the leg C.



Casting concrete chimney for the leg C.



Casting concrete chimney for the leg C.

1. Pad and Chimney Foundation (T-C082)



Siol excavation for the leg A.



Siol excavation for the leg B.



Siol excavation for the leg C.



Siol excavation for the leg D.



Casting concrete lean for the leg A.



Casting concrete lean for the leg B.

1. Pad and Chimney Foundation (T-C082)



Casting concrete lean for the leg C.



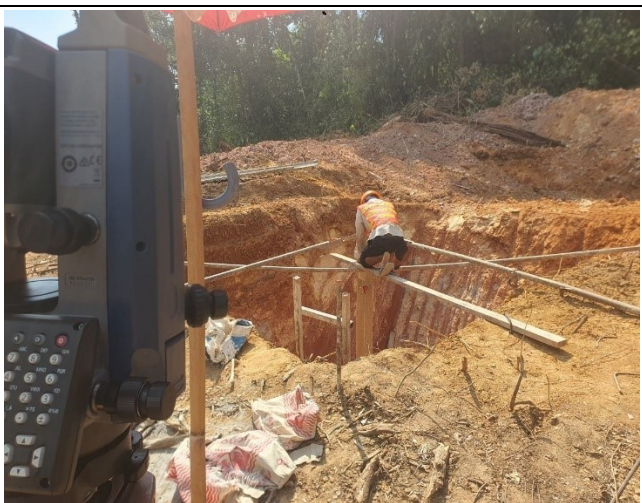
Casting concrete lean for the leg D.



Stub setting for the leg A.



Stub setting for the leg B.



Stub setting for the leg C.



Stub setting for the leg D.

1. Pad and Chimney Foundation (T-C082)



Casting concrete base for the leg A.



Casting concrete base for the leg A.



Casting concrete base for the leg B.



Casting concrete base for the leg B.



Casting concrete base for the leg C.



Casting concrete base for the leg C.

1. Pad and Chimney Foundation (T-C082)



Casting concrete base for the leg D.



Casting concrete base for the leg D.



Casting concrete chimney for the leg A.



Casting concrete chimney for the leg B.



Casting concrete chimney for the leg C.



Casting concrete chimney for the leg D.

2. Tower Erection



TA21



TA21



TA22



TA22

2. Tower Erection



TA24



TA24



TA25



TA25

2. Tower Erection



TA26



TA26



TA26A



TA26A

2. Tower Erection



TA27



TA27



TA28



TA28

1 ឧសភា 2024 5:25:15 PM

2. Tower Erection



TA30



TA30

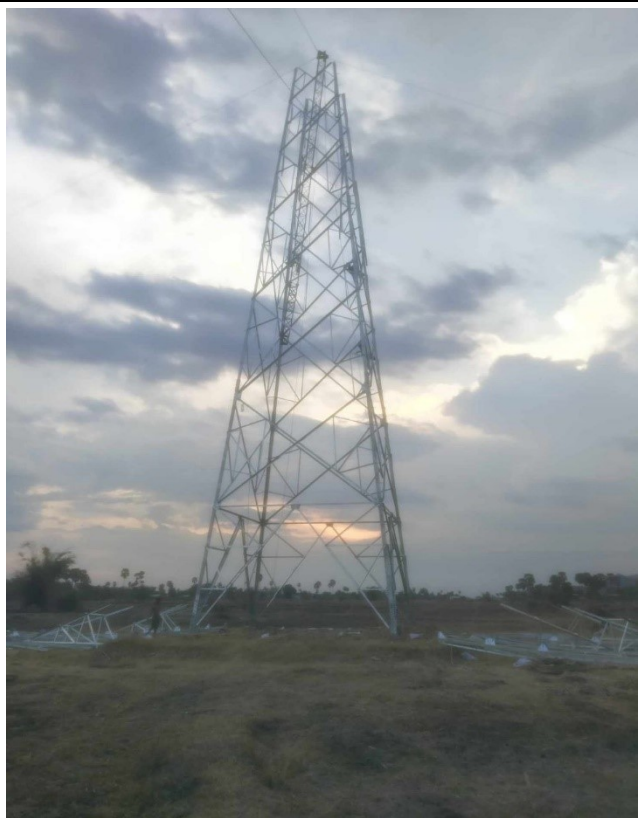


TA31

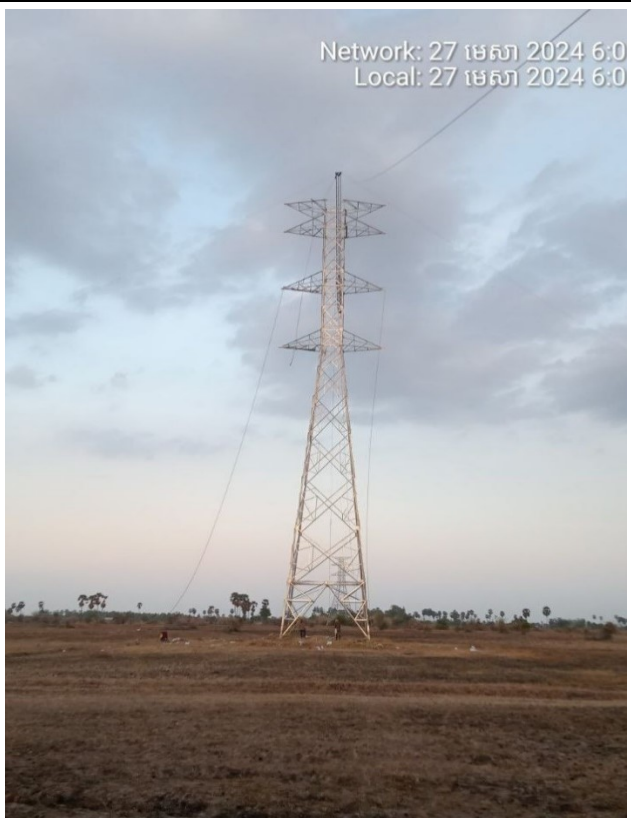


TA31

2. Tower Erection



TA34



TA34



TA36

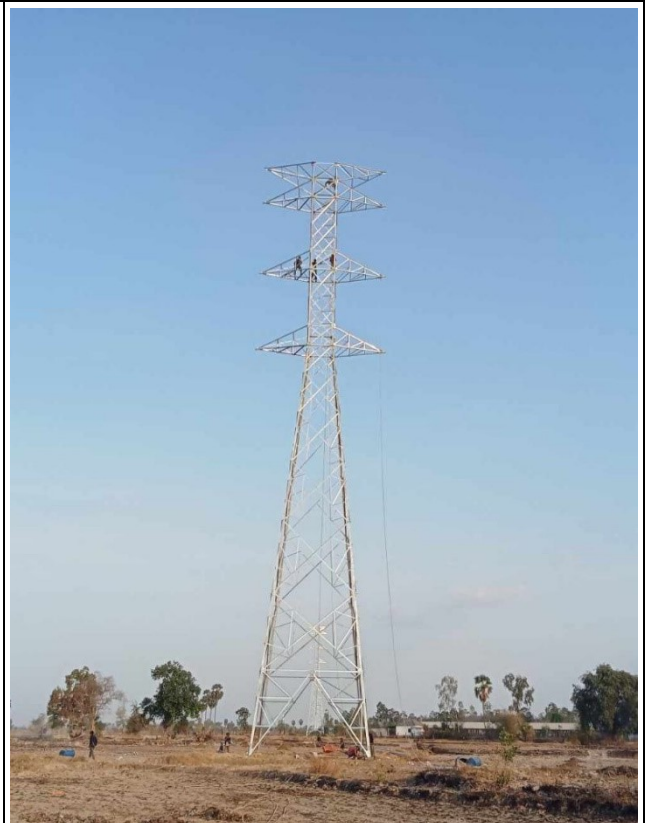


TA36

2. Tower Erection



TA32



TA32



TA35



TA35

3. Trees Cutting (TC066-TC067)



Trees cutting



Trees cutting



Trees cutting



Trees cutting



Trees cutting



Trees cutting

3. Trees Cutting (TC067-TC068)



Trees cutting



Trees cutting



Trees cutting



Trees cutting



Trees cutting



Trees cutting

3. Trees Cutting (TC128-TC129)



Trees cutting



Trees cutting



Trees cutting



Trees cutting



Trees cutting



Trees cutting

Thank you!