



HUOT SRY TRADE & CONSTRUCTION CO., LTD.

Monthly Report February-2024

**TRANSMISSION LINE 500KV
LAO BORDER TO P. PENH SS**

**PREPARED BY : SEN RINETH
SITE SURVEYOR**

Address: #45, Street P06, Sangkat Phnom Penh Thmey, Khan Sensok, PhnomPenh, Cambodia
Contact number: (+855)81 700 927, Company's Website: huotsry.com
Email Address: huotsry@gmail.com

PROJECT PROGRESS REPORT

PROJECT: PCL 17

1. SUMMARY OF CONSTRUCTION PROGRESS AS OF FEBRUARY 2024 LAOS BORDER TO PNH SS TRANSMISSION LINE 500KV.

PROJECT PROGRESS	% PLAN
1. Pad and Chimney Foundation	100%
2. Trees Cutting	100%
OVERALL PROJECT	100%

LIST OF MANPOWER

DESCRIPTION
1. Site Manager
2. Safety Officer
3. Stock Keeper
4. Foreman
5. Surveyor
6. Excavator Driver
7. Concrete Mixer Truck Driver
8. Hamer Driver
9. Truck Driver
10. Trailer Driver
11. Worker

LIST OF MACHINERY

DESCRIPTION
1. Concrete Vibrating
2. Steel Cutting Machine
3. Steel Bending Machine
4. Steel Cutting Motor
5. Welding Machine
6. Container Office and Stock
7. Generator (High Capacity)
8. Small generator
9. Concrete Mixing Machine
10. Concrete Mixing Truck
11 Self-Loading Concrete Mixer
12. Excavator
13. Hammer Truck
14. Trailer
15. Cambodia Truck
16. Tractors
17. Wheel loader
18. Bored pile drilling machine
19. Compactor machine mini
20. Car
21. Total Station (Sokkia)
22. Auto Level (Sokkia)

1. Pad and Chimney Foundation (T316.)



Soil excavation pit leg A.



Soil excavation pit leg B.



Soil excavation pit leg C.



Soil excavation pit leg D.



Lean casting concrete pit leg A.



Lean casting concrete pit leg B.

1. Pad and Chimney Foundation (T316.)



Lean casting concrete pit leg C.



Lean casting concrete pit leg D.



Stub setting pit leg A.



Stub setting pit leg B.



Stub setting pit leg C.



Stub setting pit leg D.

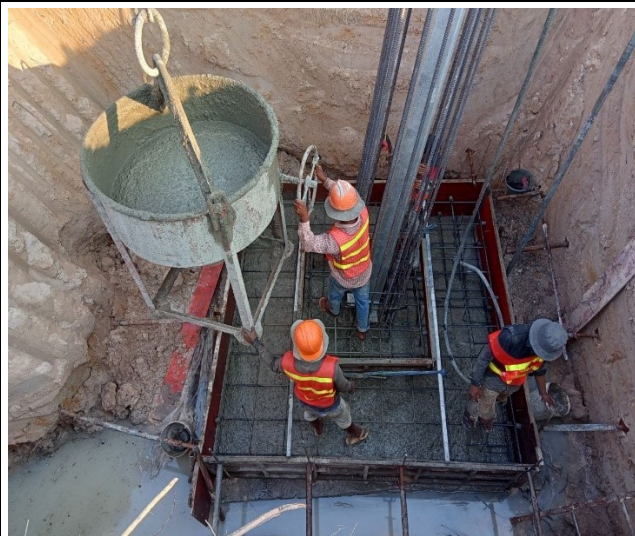
1. Pad and Chimney Foundation (T316.)



Base casting concrete pit leg A.



Base casting concrete pit leg A.



Base casting concrete pit leg B.



Base casting concrete pit leg B.



Base casting concrete pit leg C.



Base casting concrete pit leg C.

1. Pad and Chimney Foundation (T316.)



Base casting concrete pit leg D.



Base casting concrete pit leg D.



Chimney casting concrete pit leg C.



Chimney casting concrete pit leg D.



Chimney casting concrete pit leg A.



Chimney casting concrete pit leg B.

1. Pad and Chimney Foundation (T317.)



Soil excavation pit leg B.



Soil excavation pit leg C.



Soil excavation pit leg A.



Soil excavation pit leg D.



Lean casting concrete pit leg B.



Lean casting concrete pit leg C.

1. Pad and Chimney Foundation (T317.)



Lean casting concrete pit leg A.



Lean casting concrete pit leg D.



Stub setting pit leg B.



Stub setting pit leg C.



Stub setting pit leg A.



Stub setting pit leg D.

1. Pad and Chimney Foundation (T317.)



Base casting concrete pit leg B.



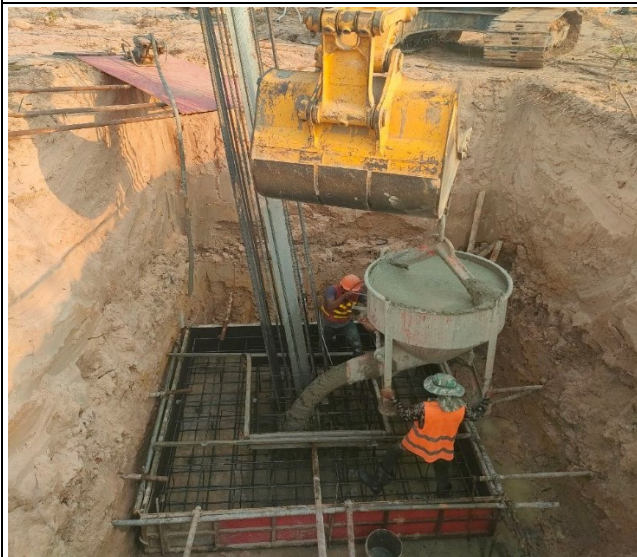
Base casting concrete pit leg B.



Base casting concrete pit leg C.



Base casting concrete pit leg C.



Base casting concrete pit leg A.



Base casting concrete pit leg A.

1. Pad and Chimney Foundation (T317.)



Base casting concrete pit leg D.



Base casting concrete pit leg D.



Chimney casting concrete pit leg B.



Chimney casting concrete pit leg C.



Chimney casting concrete pit leg A.



Chimney casting concrete pit leg D.

1. Pad and Chimney Foundation (T318.)



Soil excavation of the pit leg A.



Soil excavation of the pit leg B.



Soil excavation of the pit leg A.



Soil excavation of the pit leg A.



Lean concrete of the pit leg A.



Lean concrete of the pit leg B.

1. Pad and Chimney Foundation (T318.)



Lean concrete of the pit leg C.



Lean concrete of the pit leg D.



Stub setting of the pit leg A.



Stub setting of the pit leg B.



Stub setting of the pit leg C.



Chimney casting concrete pit leg D.

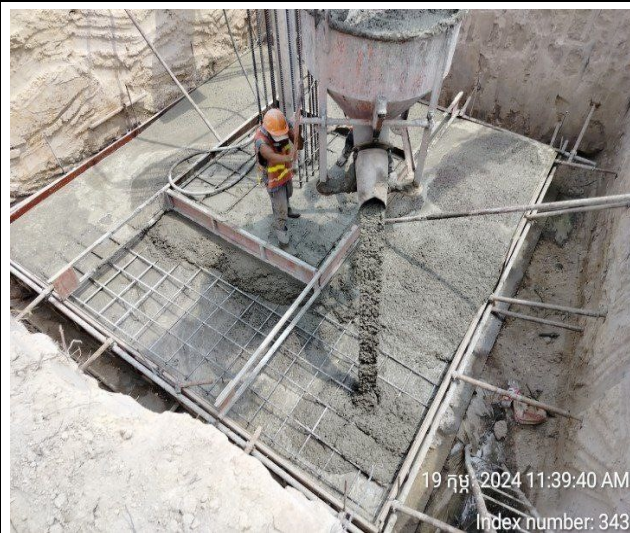
1. Pad and Chimney Foundation (T318.)



Base concrete of the pit leg B.



Base concrete of the pit leg B.



Base concrete of the pit leg A.



Base concrete of the pit leg A.



Chimney casting concrete pit leg C.



Chimney casting concrete pit leg C.

1. Pad and Chimney Foundation (T318.)



Base casting concrete of the pit leg D.



Base casting concrete of the pit leg D.



Chimney casting concrete pit leg A.



Chimney casting concrete pit leg B.



Chimney casting concrete pit leg C.



Chimney casting concrete pit leg D.

1. Pad and Chimney Foundation (T318.)



Remove chimney form box of the pit leg B.



Remove chimney form box of the pit leg B.



Remove chimney form box of the pit leg C.



Remove chimney form box of the pit leg C.



Remove chimney form box of the pit leg D.



Remove chimney form box of the pit leg D.

1. Pad and Chimney Foundation (T319.)



Soil excavation of the pit leg B.



Soil excavation of the pit leg B.



Soil excavation of the pit leg C.



Soil excavation of the pit leg C.



Lean casting concrete pit leg A.



Chimney casting concrete pit leg B.

1. Pad and Chimney Foundation (T319.)



Lean casting concrete pit leg C.



Lean casting concrete pit leg D.



Stub setting of the pit leg A.



Stub setting of the pit leg B.



Stub setting of the pit leg C.



Stub setting of the pit leg D.

1. Pad and Chimney Foundation (T319.)



Base casting concrete of the pit leg A.



Base casting concrete of the pit leg A.



Base casting concrete of the pit leg B.



Base casting concrete of the pit leg B.



Base casting concrete of the pit leg C.



Base casting concrete of the pit leg C.

1. Pad and Chimney Foundation (T319.)



Base casting concrete of the pit leg D.



Base casting concrete of the pit leg D.



Chimney casting concrete of the pit leg A.



Chimney casting concrete of the pit leg B.



Chimney casting concrete of the pit leg C.



Chimney casting concrete of the pit leg D.

1. Pad and Chimney Foundation (T319.)



Remove Chimney form box of the pit leg A.



Remove Chimney form box of the pit leg B.



Remove Chimney form box of the pit leg C.



Remove Chimney form box of the pit leg C.



Remove Chimney form box of the pit leg D.



Remove Chimney form box of the pit leg D.

Thank you!